

Shear Beam Load Cell

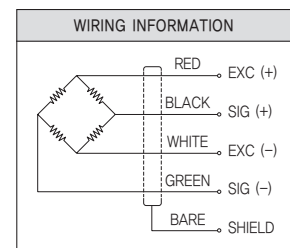
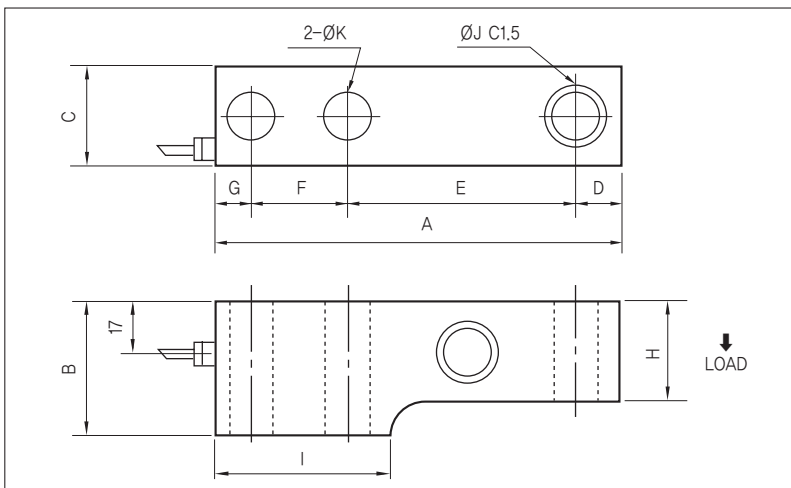
>Model CP57

Single ended shear beam load cell
high accuracy platform scales and a variety of process
weighing applications.
Nickel plated Alloy steel



>Model CPS

- Shear beam loadcell with a high accuracy of 0.03% R.O.
- Platform and Tank scale weighing.
- Protection Class IP67
- Fully welded seal with stainless steel cover for hostile environment applications.
- 17-4PH stainless steel construction for high accuracy.



>SPECIFICATIONS

| Specifications | Accuracy |
|-------------------------------------|----------------------------------|
| Rated capacity(R.C) | 500kgf, 1tf, 2tf, 3tf, 5tf, 10tf |
| Rated output(R.O) | 2mV/V±0.1% |
| Nonlinearity | 0.02% of R.O. |
| Hysteresis | 0.02% of R.O. |
| Repeatability | 0.02% of R.O. |
| Creep(20min) | 0.03% of R.O. |
| Zero balance | ±5% of R.O. |
| Temperature effect, on rated output | 0.02% of LOAD/10°C |
| Temperature effect, on zero balance | 0.05% of R.O./10°C |
| Temperature range, compensated | -10~50°C |
| Temperature range, safe | -20~80°C |
| Terminal resistance input | 350±30Ω |
| Terminal resistance output | 350±3Ω |
| Insulation resistance bridge | 2000MΩ |
| Excitation recommended | 10V |
| Safe overload | 150% R.C. |
| Cable length | Ø5±0.3mm 4core, 3m |

>SPECIFICATIONS

| Specifications | Accuracy |
|-------------------------------------|---|
| Rated capacity(R.C) | 500kgf, 1tf, 2tf, 3tf, 5tf, 9tf, 10tf, 12tf |
| Rated output(R.O) | 2mV/V±0.1% |
| Nonlinearity | 0.03% of R.O. |
| Hysteresis | 0.03% of R.O. |
| Repeatability | 0.03% of R.O. |
| Creep(20min) | 0.03% of R.O. |
| Zero balance | ±5% of R.O. |
| Temperature effect, on rated output | 0.02% of LOAD/10°C |
| Temperature effect, on zero balance | 0.05% of R.O./10°C |
| Temperature range, compensated | -10~50°C |
| Temperature range, safe | -20~80°C |
| Terminal resistance input | 350±30Ω |
| Terminal resistance output | 350±3Ω |
| Insulation resistance bridge | 2000MΩ |
| Excitation recommended | 10V |
| Safe overload | 150% R.C. |
| Cable length | Ø5±0.3mm 4core, 3m |

>DIMENSIONS TABLE

unit:mm

| Model | Capacity | A | B | C | D | E | F | G | H | I | ØJ | ØK | Weight(kg) |
|-------|------------------------------|-------|------|------|------|-------|------|------|------|------|------|------|------------|
| CPS | 500kgf~2tf (4.903kN~19.61kN) | 135 | 38 | 30 | 17 | 75 | 25 | 18 | 34 | 58 | 13.5 | 13.5 | 1.1 |
| | 3tf~5tf (29.42kN~49.03kN) | 170 | 48 | 38 | 20 | 85 | 50 | 15 | 39 | 79 | 18 | 18.5 | 2.3 |
| | 9tf (88.26kN) | 200 | 52 | 56 | 20 | 95 | 62 | 23 | 44 | 110 | 21 | 24.5 | 5 |
| | 10tf~12tf (98.07kN~117.1kN) | 263 | 60 | 60 | 30 | 118 | 90 | 25 | 52 | 143 | 26 | 26 | 9 |
| CP57 | 500kgf~2tf(4.90kN~19.61kN) | 131 | 38 | 30 | 12.7 | 76.2 | 25.4 | 16.7 | 34 | 57 | 13.5 | 13.5 | 1.1 |
| | 3tf~5tf(29.42kN~49.03kN) | 171 | 44.5 | 38 | 19 | 95 | 38 | 19 | 38 | 76.2 | 20.5 | 20 | 2.3 |
| | 10tf(98.07kN) | 222.3 | 57.2 | 50.8 | 25.4 | 120.7 | 50.8 | 25.4 | 50.8 | 108 | 26.2 | 26.2 | 9 |

★Specifications are subject to change without notice.