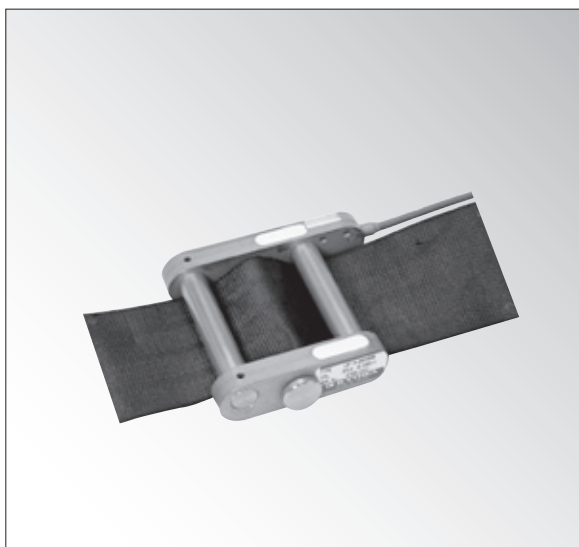


LBT-A-20KNSA1

Seat Belt Tension Transducer



Measuring impact-initiated tension of seat belt in crash tests

Using a strain gage, the LBT-S-20KNS1 detects the impact-initiated tension applied through the dummy to the seat belt.

Specifications

Performance

Rated Capacity	20 kN
Nonlinearity	Within $\pm 2\%$ RO
Rated Output	Approx. 2.5 mV/V

Environmental Characteristics

Safe Temperature	0 to 60°C
Compensated Temperature	10 to 50°C
Temperature Effect on Zero	Within $\pm 0.1\%$ RO/°C
Temperature Effect on Output	Within $\pm 0.1\%$ /°C

Electrical Characteristics

Safe Excitation	10 V AC or DC
Recommended Excitation	1 to 5 V AC or DC
Input Resistance	350 Ω $\pm 2\%$
Output Resistance	350 Ω $\pm 2\%$
Cable	4-conductor (0.08 mm ²) heat-resistant vinyl shielded cable, 3.2 mm diameter by 7 m long, terminated with a connector plug R05-PB5M (Shield wire is not connected to the case.)

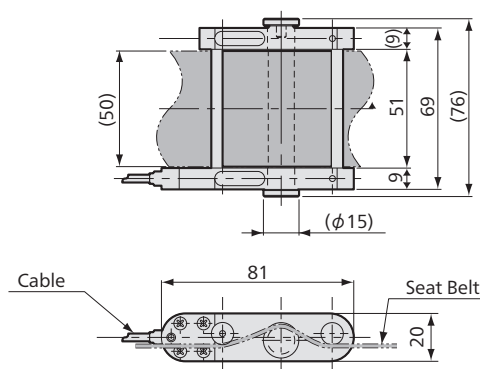
Mechanical Properties

Safe Overloads	100%
Enclosure	Metallic finish
Weight	Approx. 130 g
Others	Calibrated using Kyowa standard seat belt. Not waterproofed

Note) Characteristic values are based on Kyowa calibration method and conditions.

*It is acceptable to calibrate with supplied seat belt.

■ Dimensions



Connector plug
R05-PB5M



LBT-A-20KNSA1
Recommended
products for
combination



DIS-5010A
→ 5-40



DIS-7000 Series
→ 5-38



DIS-5210A
→ 5-47

It requires change of the conversion cable or plug.

