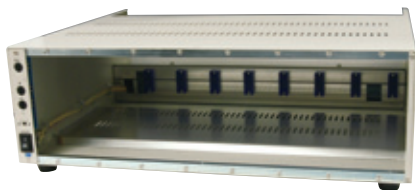


Optional Accessories for Dynamic Strain Measuring Instruments



Housing Cases

● Portable Housing Case YC-A for DPM-900 Series CDV/CDA-900A, VAQ-700A, DA-710A



YC-8A

Models	Power Supply	Housing Units	Width [mm]	Depth [mm] (Excluding Protrusions)	Height [mm]
YC-3A	AC	3	179.3	336.9	157.5
YC-3A-AC/DC	AC or DC				
YC-4A	AC	4	228.8		
YC-4A-AC/DC	AC or DC			336.9	147.5
YC-6A	AC	6	327.8		
YC-6A-AC/DC	AC or DC				
YC-8A	AC	8	426.8	336.9	147.5
YC-8A-AC/DC	AC or DC				

Specifications

Power Supply	100 VAC 100 VAC or 12 VDC (YC-A-AC/DC)
Switches	Switched on the front panel Power SW, BAL SW, All-Channel CAL SW, and Key-lock SW
Terminals on Rear Panel	Remote switched on the rear panel Balance adjustment, calibration, key lock, and synchronized connection

1. No function to get status
2. The DPM-900 Series and CDV/CDA-900A SET function is not supported
3. Not suitable for use on-vehicle test
4. The unit may not be stood on its rear surface
5. YC-3A/4A have a carrying handle

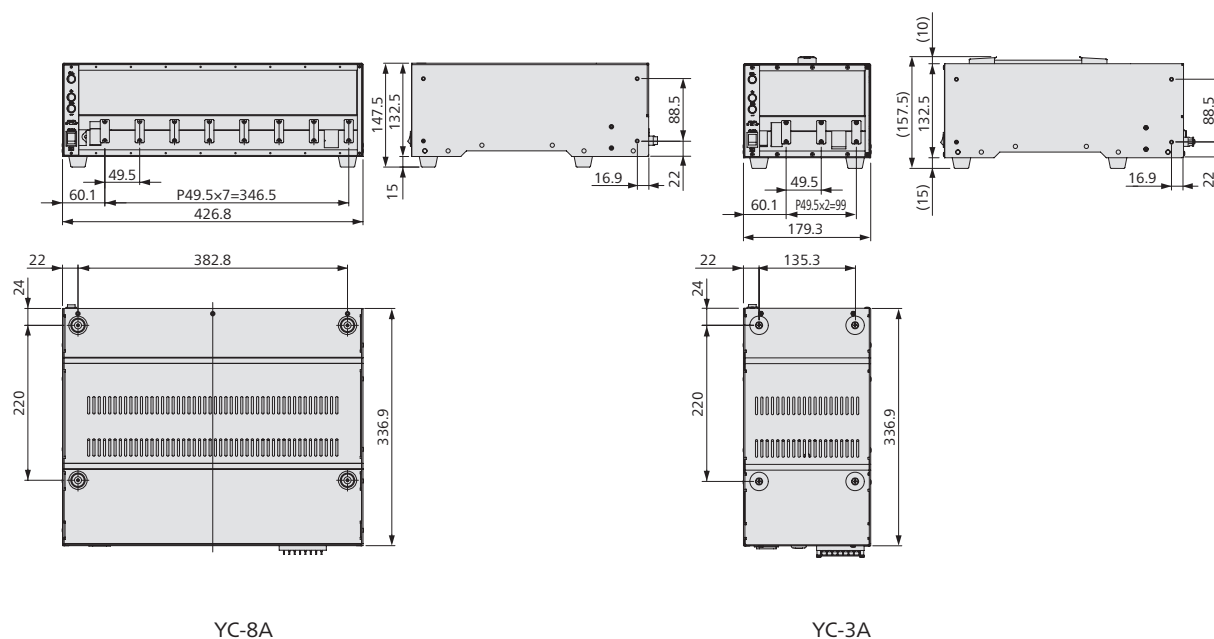
Standard Accessories

AC power cable P-17 (With 2-pin conversion plug CM-39), instruction manual

Optional Accessories

JIS rack mounting bracket YC-JIS (Supports YC-8A only)
Dummy panel for 1 channel YB-DUMMY
DIN rack mounting bracket YC-DIN (Supports YC-8A only)
Handle for YC-A YC-HANDLE

■ Dimensions





Noise Filters

To remove noise containing high-frequency components.

● **F-7B**



For input of
all DPM series models

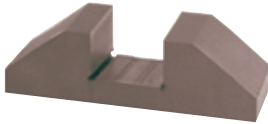
● **F-BNC**



For output of
all DPM series models

Amplifier Stands

● **FA-1B**



DPM-900 Series,
DA-710A, CDV-900A
CDA-900A, VAQ-700A

Bridge Boxes

● **DB-120A**



For details, see page 3-123.